

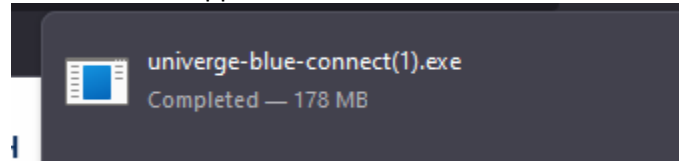
How to Install and Setup Desktop App

1. Follow this [link](#) to the download page.
2. For Windows PC press "CONNECT FOR PC". For Mac press "CONNECT FOR MAC".

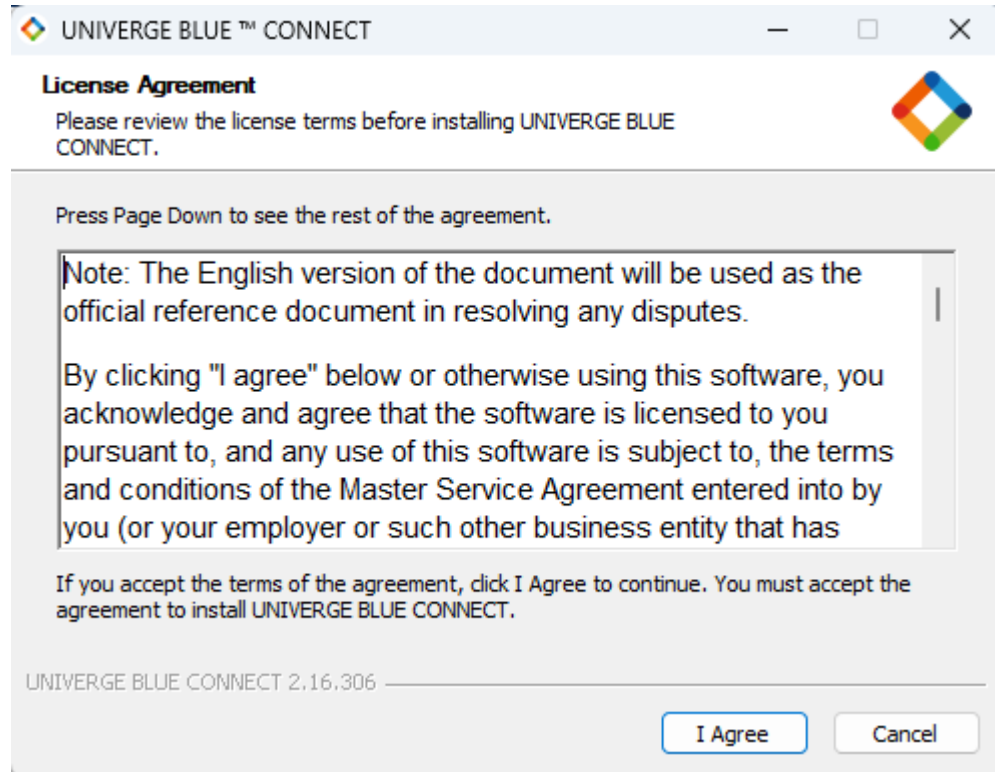
CONNECT FOR PC

CONNECT FOR MAC

3. Once downloaded click on the application.



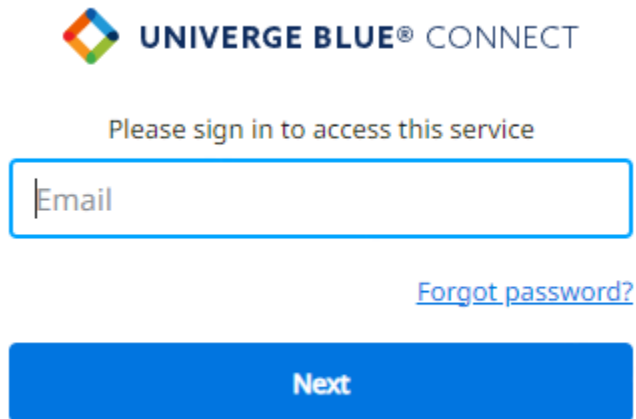
4. Follow the installation instructions.



5. After installation launch the Univerge Blue Connect app.

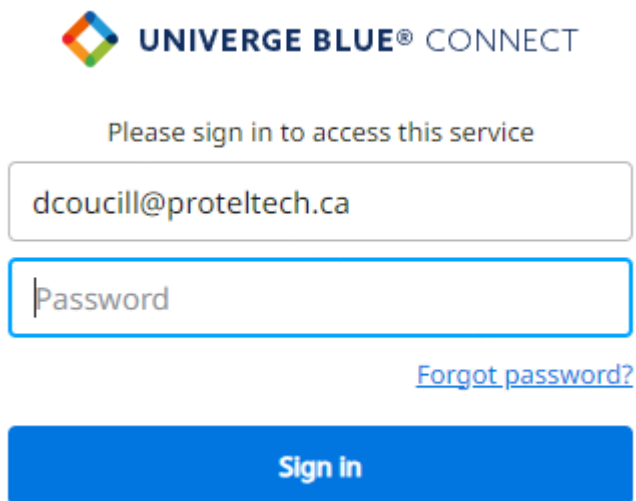
How to Install and Setup Desktop App

6. Enter your email address.



The image shows a login screen for Univerge Blue Connect. At the top left is the logo, a colorful diamond shape. To its right is the text "UNIVERGE BLUE® CONNECT". Below the logo and text is the instruction "Please sign in to access this service". There is a text input field with the placeholder text "Email". To the right of the input field is a blue link that says "Forgot password?". At the bottom of the screen is a large blue button with the text "Next" in white.

7. Enter your password. If you do not know your password, contact us and we'll give you a new one.



The image shows a login screen for Univerge Blue Connect. At the top left is the logo, a colorful diamond shape. To its right is the text "UNIVERGE BLUE® CONNECT". Below the logo and text is the instruction "Please sign in to access this service". There are two text input fields. The first field contains the email address "dcoucill@proteltech.ca". The second field has the placeholder text "Password". To the right of the second input field is a blue link that says "Forgot password?". At the bottom of the screen is a large blue button with the text "Sign in" in white.

8. Now you're in the app. If you have further questions contact us at support@proteltech.ca